



THE NEWSLETTER
of the
EAST MIDLANDS ORIENTEERING ASSOCIATION

SUMMER 2025



EMEWS EDITOR:

Mike Gardner
3 Gatcombe Close
Oakwood
Derby
DE21 2PZ

Email: mikegardvo@sky.com

EMEWS

EMEWS is the newsletter of the East Midlands Orienteering Association. The views expressed in this newsletter are not necessarily those of the East Midlands Orienteering Association, nor of the Committee.

East Midlands Orienteering Association Officials 2024/2025

Chairman	Ann-Marie Duckworth jasrduckworth@btinternet.com
Vice Chairman	Vacant
Financial Secretary	Andy Nicholls andy_nicholls2003@yahoo.co.uk
Development Co-ordinator	John Hurley johnhurley870@btinternet.com

Club Rep Roles

DVO Rep	John Hurley johnhurley870@btinternet.com
LEI Rep	Iain Phillips iain@phillips4.co.uk
LOG Rep	Trudy Crosby trudycrosby@live.co.uk
NOC Rep	Pauline Olivant p.olivant@btinternet.com

Other Committee Roles

Minutes Secretary	Mike Gardner	mikegardvo@sky.com
Fixtures Secretary	Ursula Williamson	ursula.williamson.orienteer@gmail.com
Coaching Coordinator	Hilary Palmer	hjpalmer@ntlworld.com
Junior Squad	Ann-Marie Duckworth	jasrduckworth@btinternet.com
Mapping Advisor	David Olivant	d.olivant@btinternet.com
EMEWS Editor	Mike Gardner	mikegardvo@sky.com
Webmaster	John Cooke	jholtcooke@btinternet.com
EMOA League	Ursula Williamson	ursula.williamson.orienteer@gmail.com
Urban League	Ursula Williamson	ursula.williamson.orienteer@gmail.com
President	John Woodall	woodallja@ntlworld.com

East Midlands website: www.emoa.org.uk

Copy Date for next issue: **22nd September 2025 for next EMEWS**. Contributions are always welcome but especially by e-mail (mikegardvo@sky.com).

I will then get the next edition out in early October 2025.

Cover - Thanks again to Ernie for the cover. Those of you who attended the Carsington event may recognise the stile that had to be climbed into (and out of) the area. Ernie comments "As you can see a memory of Carsington Pastures and a fleeting thought when in a temporary stationary position - elderly gentleman manages to get halfway over the stone stile on the way to the Start and after the Finish and then had a small problem getting off again - thanks to all those both before and after the Event for offering words of encouragement and helping hands - very much appreciated!"

Contents – EMEWS 297

EMOA Committee Meeting Notes - 30 th June 2025	3
EMOA AGM Draft Agenda	6
Orienteering Foundation Report - Pauline Olivant	7
EMJOS - April - June 2025 - Ann-Marie Duckworth	8
Chinley Churn	9
East Midlands Urban League 2025	12
East Midlands League 2025	15
Puzzle Page	19
Fixtures	20

-----000-----

Notes from EMOA Meeting – 30th June 2025

EMOA Champs Questionnaire - There were a total of 59 responses (39 from men, 20 from women). Of those 55 ran on allocated EM Champs course for their age group; 1 ran a longer course; 3 ran a short one. Of the men 24 were happy with the course allocation; 7 would have preferred a longer course; 8 a short course (which seems to indicate the courses were about right). Of the women 15 were happy with the course allocation; 5 would have preferred a longer course; 0 a shorter one (maybe needs a little more analysis). 13 of the men ran on courses where EM allocation differs from BOF recommendation. Of these 6 were happy with the course allocation; 3 would have preferred a longer course; 4 a shorter one. 7 of the women ran courses where EM allocation differs from BOF recommendation. Of these 5 were happy with the course allocation; 2 would have preferred a longer course; 0 a shorter one. In summary it looks like we have the course combinations about correct for EMOA members. Iain wants to do a little more analysis and talk to a few people so the intention is to provide further feedback at the EMOA AGM.

New EMOA Website - The EMOA website is due for an upgrade which should make it easier to use on a mobile device. John Cooke is just awaiting final information to enable him to create the new site, which will include an updated development plan, section on Junior Squad and a few corrections to the old site.

Financial Secretary Report - A much quieter period generally these last couple of months. Overall membership fees income is just below budgeted levels for the full year. Event levies are low with a £384 shortfall to budget which won't be fully made up by Irchester and Wirksworth. Interest income is £115 higher than budgeted for the year, partly due to the JK profits being held onto temporarily. EMJOS overall has spent (net of income received) £301 more than budgeted but generated £456 extra cake sales and other income to more than offset this. No grants paid to clubs this year or coach development costs incurred and senior talent support only paid to one person so far (with another pending). The payment for the development conference venue was paid earlier than budgeted, expected to be part of the 2025/26 costs. A current bank balance (total of both accounts) of £13K. Discussion took place

EMEWS

on some of the items in the budget and likely status for next year. Andy will create a budget for the AGM and circulate to committee in advance.

Development -

Development Projects

Firm Applications for Funding

- None currently in progress

Preliminary Applications of Interest

- LOG/24/1 Club website update - withdrawn.
- DVO/25/1 Club Development Officer new role - awaiting more details.

Club-funded development projects

- DVO/24/3 MapRuns 2024/25/26. DVO have been awarded a Sport England grant which will fund most of the costs of 36 MapRun events over the next two years, which are to be co-ordinated by the Club Development Officer with the aim of attracting new participants from running and other sporting clubs.
- DVO/24/4 MapActive courses and level D events 2024/25. DVO have been awarded a grant from the Orienteering Foundation, delivered in 2 tranches, the second conditional on demonstrating delivery of phase 1. This grant covers 2 MapActive courses, a Level D programme of 10 events and a Navigation festival for newcomers at Hardwick or a similar venue.
- NOC/25/1 Club Coaching. Training for 20 NOC members on 18/1/2025. (Joined by 7 from DVO).

Officials Conference 2025

The Officials Conference will be held at the Rushcliffe Country Park meeting room on Saturday September 20th 2025. The agenda is:

- 1 Rules
 - 1.1 Rules Update 2024 and 2025 (Rules Group member to be confirmed)
 - 1.2 Rules Exercise (Ranald Macdonald)
- 2 Mapping
 - 2.1 ISOM, ISSprOM and IOF Control Descriptions 2024 updates (David Olivant)
 - 2.2 Sources of data for mapping and controlling.
- 3 Environmental Risk Assessment
- 4 EMOA Event Review (John Hurley)
 - 4.1 Feedback on very short green courses.
 - 4.2 Other best practice for events.
- 5 Regional Development (John Hurley)
 - 5.1 MapActive briefing (Hilary Palmer)
 - 5.2 Ideas for developments related to participation, use of areas, environmental.
 - 5.3 Co-ordination and financing of developments.

EMJOS - See report below.

English Orienteering Council - The EOC AGM reported that costs for the teams participating in VHI, SHI, JHI and Interland are increasing (mainly accommodation) and are spread across few members across the English regions. This has meant the rates for EOC across members will be increased. In terms of organising events like JHIs and make them less costly it was suggested hosting an open event later that day to provide dual use of the facilities/helpers, allow travelling adults an opportunity to run and provide more of an atmosphere to cheer on the juniors

Fixtures - The League and Urban League fixtures are covered separately in EMEWS.

- **Future Major Events**

- a. **12 Jul 2025 - EuroCity Day 1** - NOC - Meadows Area
- b. **13 Jul 2025 - EuroCity Day 2** - LOG - Lincoln
- c. **7 Sep 2025 - Midland Champs** - DVO - Chinley Churn
- d. **15 Feb 2026 - East Midland Champs** - DVO - Longshaw
- e. **10 Oct 2026 - British Schools Score Champs** - DVO - Shipley Park
- f. **2027 - CompassSport Cup Heat** - DVO - Stanton Moor (TBC)
- g. **5 Feb 2028 - British Nights** - LEI - Irchester / Cademan
- h. **6 Feb 2028 - Midland Champs** - LEI - Cademan / Belvoir

- **Future Possible Events**

- a. EMOA Champs 2027 (NOC scheduled to host)
- b. EMOA Champs 2028 (LOG scheduled to host)
- c. VHI 2028 - Ant Squire is looking at how this can be achieved. DVO may be able to support.
- d. EMOA Champs 2029 (DVO scheduled to host)
- e. CompassSport Cup heat 2029 (LEI or LOG scheduled to host)
- f. JIRCS 2030
- g. EMOA Champs 2030 (LEI scheduled to host)
- h. Midland Champs 2031 (EMOA scheduled to host)

Next Meeting - The next meeting will be the EMOA AGM and it is scheduled for Monday 22nd September in the PACE Room at Clifton Village.

-----000-----

The 61st East Midlands Orienteering Association AGM

Notice is hereby given that the Annual General Meeting of the East Midlands Orienteering Association will be held at 7.30pm on Monday 22nd September 2025 at the Pace Room, Clifton, Nottingham.

AGENDA

1. Apologies for absence
2. Approval of minutes of last AGM September 16th 2024
3. Chair's Report
4. Financial Secretary's report including membership numbers and presentation of accounts
5. Development Co-ordinator's Report
6. Approval of Balance Sheet and Income and Expenditure Statement
7. Election of Principal Officers
 - Chair
 - Vice Chair
 - Financial Secretary
 - Development Co-ordinator

8. Other EMOA Officers

Post	Nominee
Mapping	David Olivant (NOC)
Coaching	Hilary Palmer (NOC)
EM Junior Squad	Ann-Marie Duckworth (DVO), aided by Ant Squire (NOC)
EM League	Ursula Williamson (LEI)
Urban League	Ursula Williamson (LEI)
Regional Fixtures Secretary	Ursula Williamson (LEI)
President	John Woodall (NOC)
Minutes Secretary	Mike Gardner (DVO)
EMEWS Editor	Mike Gardner (DVO)
Webmaster	John Cooke (DVO)
National Forest	Roy Denney (LEI)

9. Appointment of Independent Financial Examiner
10. Budget projections for coming year to 30.6.2026 and recommendations for membership fees and event levies (Financial Secretary)
11. Fixing of charges
 - Membership fees
 - Event Levies
12. Changes to the EMOA Constitution

One change was made during the year to the standing orders (in the constitution changes can be made by Executive Committee to Standing Orders, but changes to constitution must be voted on by AGM). The change is for the Independent Financial Examiner role. The constitution stated the IFE must be from a different club to the Financial Secretary. Now the word preferably has been added to the statement (i.e. the IFE would preferably be from a different club). If we had not made the change we would need to have tried to find a new IFE.

13. Feedback on EMOA Champs Course / Age class combinations (Iain Phillips)

14. Plans for the coming year (Chair)

15. Any Other Business

16. Close of formal meeting followed by open discussion

If anyone has any additional items they want adding to the agenda of the AGM, then please let EMOA Secretary (Mike Gardner) know. If anyone has any proposals to change the constitution let Mike know as well as these need to be circulated in advance. Also, if anyone wants to send apologies please also let Mike know.

-----000-----

Orienteering Foundation Report June 2025

Latest news.

- Moire O'Sullivan from Lagan Valley OC came forward and offered to help with social media.
- A date for diaries, a provisional date of 1st November 2025 has been planned for a Orienteering Foundation Coaching day in the Lakes, it isn't fully confirmed yet so you are advised to not to book firm plans, but more information will appear [here](#) as soon as it is available
- There will be a second Orienteering Foundation Coaching day, this one in South Wales, Sat 8th November 2025 on Merthyr Mawr, organised by Swansea Orienteering Club. Make a weekend, full programme of supporting events planned, full details including how to book are [here](#)
- JROS have been awarded a grant to support all 4 summer junior tours this year.
- We are working with the Civil Service Sports Council and an award has been made for a project in their Active Well Being programme. More details [here](#).
- ERYRI were awarded a grant to support the provision of a first aid course for their members.



The Foundation would like to thank all those who responded to the Volunteer Survey. We received over 700 replies, and the working group will continue its work during 2025.

EMEWS

The Foundation are looking to get a better understanding of why people join a club to collate and share this information with all clubs. We would be appreciative of any insights you have gained on this question, perhaps from any surveys you have some or maybe by asking recent joiners to your club. If you have anything to contribute it would be much appreciated. Our trustee Roger Scrutton is coordinating this so please email him at scruttonroger@gmail.com

If you would like to read more about this news or would like to find out more about the work of the Foundation please see our web site, www.orienteeringfoundation.org.uk,

Why not sign up for the Orienteering Foundation [newsletter](#), [Facebook](#), [Instagram](#) or [Twitter](#) accounts.

Pauline Olivant (Trustee Orienteering Foundation); 01623 792336; p.olivant@btinternet.com

-----000-----

EMJOS April to June 2025

Training, events and JROS Camps

Park Hall WMJS 7th June

On one of the wettest and coldest training days for this time of year, 6 juniors joined the West Midland's squad (lead coach for day Kirsten Strain). They practiced staying on the line (corridor limited map), compass setting, contour interpretation and planning the long leg routes in advance. The afternoon was then focused on 'race exercises' - the head to head on legs, gaffling and navigating your own race. We had a new enthusiastic junior join the squad day - welcome Ben (DVO).

Loughborough University 21st June

Sprint training at the university was run by YHJS (Pauline and Pete Tryner), with access help and basemaps from LEI (thanks). 7 exercises in total with a mix of regular sprint course, building/impenetrable barrier only map, sprint relay (gaffled mass start) and artificial barrier courses (no actual barriers though!). Eoin joined the Yorkshire 16s/18s for the day and the other 7 EMJOS juniors trained as a group but joined YHOA for the relay exercises.

Future training and events

The region nominated three athletes to go to JROS camps this summer, however due to injury and not achieving a Championship standard run in the selection races, we will only have Eoin Simpson at Deeside (Findholm, Scotland). Building on some strong race results at top events and selection races in the spring, Eoin will be looking to develop with other talented athletes with the top national JROS coaches.

The next training session is being planned to be 21st September on Cannock Chase, led by Dai Bedwell (DVO) in collaboration with WMJS. Setting up some race and relay

preparation for the Junior Inter Regional Champs (JIRCS and Senior Home Internationals using same area of the Lakes, 27th/28th September).

Then plans for a local sessions in East Midlands 18th October, before a joint weekend away with WMJS at the Orienteering Foundation training day 8th November South Wales.

EMJOS have 1 or 2 junior M/W15 who may go to the JROS Hawkshead weekend training (4 Lakeland training areas Saturday & Sunday), crazy YHA nighttime relay and social.

EMJOS will also be hosting a cake stall at the Midland Champs Chinley Churn 7th September.

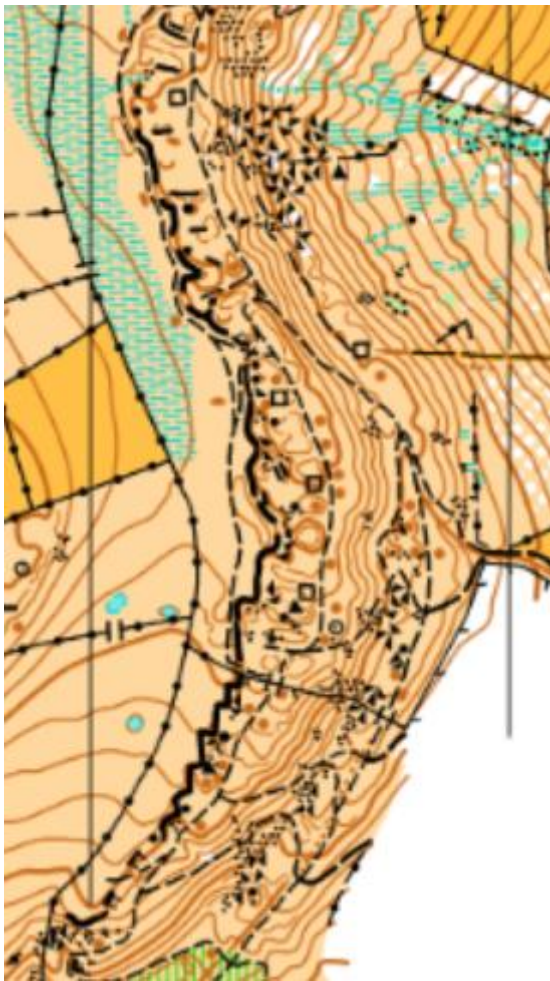
Please keep signposting the Squad to new junior club level navigators!

Ann-Marie Duckworth EMJOS coach and coordinator

-----000-----

Chinley Churn

Chinley Churn is a prominent gritstone hill between the villages of Chinley and Hayfield in the Peak District. The summit is 457 metres (1,499 ft) above sea level. The hilltop ridge area is designated as open access land, following the Countryside and Rights of Way Act 2000. The trig pillar on the hill was removed sometime after April 2024 - thought to be by the farmer. The trig pillar at the lower secondary summit further south is on private land.



Cracken Edge Quarry (worked from at least 1640 until the 1900s) is designated a Regionally Important Geological Site. This is a large disused stone slate quarry. The quarry forms the dramatic crest of the hill. Through centuries of workings, the scarp edge of Chinley Churn has been dramatically shaped into steps. The main quarry face stretches for 1km and rises to at least 10m at its highest.

Below these sheer quarried rock faces are steps consisting of flat, stone-working areas with large spoil heaps and routeways, with slopes of spoil scree between. This rock is special because it splits beautifully into thin pieces perfect for flags and roof slates.

The History of Cracken Edge Quarry

The background...

EMEWS

Since the 14th century, the land around Chinley, or Mainstonefield as it was known, was used as farmland by the Abbey of Merivale.

In 1569, after the Dissolution, this land was divided into 40 portions, each known as a 'neighbourship'. Each of the 'neighbours' then paid 5s 4d in rent. These neighbourships are interesting because they appear to be a system unique to Chinley and formed the template for land use and sale for the next 300 years - they are still referred to in recent land leases!

The quarry...

In 1628, a commission was written laying down the allocation of the neighbourships. **Here, we have our first mention of the quarry.** The commission includes the 'slate breaks' at Cracken Edge which were attached to the neighbourships. A 'slate break' was an apportionment of the hill crest, giving the owner the right to quarry the stone. Therefore, whilst 1628 is our first known date of the quarry, we can assume it was active before then, making it at least 400 years old!

Cracken's hey day

By the 1700s the region had industrialised and the village of Chinley had grown. The Peak Forest Canal and the Tramway at Buxworth and Chinley were built between 1799 and 1806. In 1867 the railway came to the village. These developments greatly increased the potential for industrial output and export.

The quarry yielded building stone but specialised in the production of paving and roofing slabs. Besides surface extraction, better stone at a greater depth was extracted by underground mining.



In its hey day, Cracken was sending **16,000 tonnes** of Cracken stone by train every year! Cracken is a significant part of local history. It was an important resource and employer. Many local men and boys worked there and many of the houses in Chinley have been built, the floors paved and the roofs slated with Cracken Stone.

As concrete became cheap and accessible, the market for quarried slate reduced dramatically. The quarry eventually closed in the 1920s. Whilst no stone has been extracted here for 100 years, the quarry lies virtually unchanged and provides an educational and

beautiful place to visit. The evidence of past activity is all around you at Cracken Edge. It is interesting to imagine all the activity and hubbub that must have been here when workers still came to break stone. A significant feature of Cracken Edge is the enormous piles of spoil and massive slabs of tumbled rock face.

Pieces like this show how the stone has been worked by an expert technique of wedging and hammering at the top of the face to prise whole sections of rock away. Quite well preserved on the site are the remains of a winding wheel. It was built in 1901 to make it easier to transport the stone from the hill side to the road. The accompanying railtracks ran right down the slope. You can see the straight channel in the ground leading all the way to the road where the tracks used to be. The wheel was built by Frank and Alfred Kirkham. Unfortunately the wheel proved unsatisfactory because the wagons jumped the tracks and it wasn't used for long.

Lying at the northern end of the quarry are the remains of a crane. This probably dates from the 19th and early 20th century and would have been used for lifting stones to be swung into new positions.

Across the whole quarry are at least 11 small drystone structures. These are quarrymen's huts fashioned from spoil to provide storage and shelter from the often harsh High Peak weather.

There are noticeable 'access routes' leading from the main footpath to the sheer rock face. This is where gaps were intentionally maintained or created in order to provide the quarrymen access to the quarry face. One of the main footpaths between Cracken Edge and Chinley is known as Sandy Lane. It used to be called Lea Lane and for a long time was the only route by which the quarrymen could transport stone. It was a hazardous journey with just a wagon and pony carrying huge amounts of stone down this steep and rocky lane.

A burial barrow (near the site of the now removed modern trig pillar) was reported in 1901 as the resting place of an ancient Celtic chieftain called Taro Trin (the Bull of Conflict), according to tradition.

-----000-----

East Midlands Urban League 2025

The following is the current table for the EMOA Urban League 2025 which comprises of the following events:

1st January - Derby City (DVO) - (UL1)

29th June - Wirksworth (DVO) - (UL2)

12th July - The Meadows (EuroCity weekend) (NOC) - UL3

13th July - Lincoln (Eurocity race) (LOG) - UL4

10th August - Lutterworth (LEI) - UL5

6th September - Hamilton (LEI) - UL6

28th September - Retford (NOC) - UL7

12th October - Newark (LOG) - UL8

Your best 4 scores will count from the 8 events. Note: we have reverted to the original scoring system of counting all competitors. Below is the current table showing the top 10 and omitting non-EMOA members (this year scoring based only on EMOA members):

Junior Men

	Name		Club	best 4	UL1	UL2	UL3	UL4	UL5	UL6	UL7	UL8
1	Peter Birchall	M16	DVO	89	89							

Junior Women

	Name		Club	best 4	UL1	UL2	UL3	UL4	UL5	UL6	UL7	UL8

Open Men

	Name		Club	best 4	UL1	UL2	UL3	UL4	UL5	UL6	UL7	UL8
1	Richard Robinson	M40	NOC	96	96							
2	Nerijus Rozkovas	M35	DVO	91	91							
3	Mike Chapman	M45	LOG	84	84							
4	Ed Cochrane	M35	NOC	82	82							
5	Andrew Evans	M45	LOG	77	77							

Open Women

	Name		Club	best 4	UL1	UL2	UL3	UL4	UL5	UL6	UL7	UL8
1	Kirsty Buxton	W35	DVO	90	90							
2	Andrea Page	W45	LOG	85	85							
3	Jessica Williams	W18	DVO	84	84							

Veteran Men

	Name		Club	best 4	UL1	UL2	UL3	UL4	UL5	UL6	UL7	UL8
1	Chris Millard	M40	DVO	100	100							
2	Richard Parkin	M55	DVO	93	93							
3	Edward de Salis Young	M55	LEI	89	89							

EMEWS

4	David Jolly	M50	RAFO	87	87							
5	Andy Nicholls	M50	LEI	85	85							
6	Rob Williams	M45	DVO	82	82							
7	David Newton	M45	DVO	80	80							
8	Tom Hartland	M45	DVO	79	79							
9	Andrew Selby	M40	DVO	78	78							

Veteran Women

	Name		Club	best 4	UL1	UL2	UL3	UL4	UL5	UL6	UL7	UL8
1	Tanya Taylor	W50	LOG	96	96							
2	Emily Williams	W45	DVO	89	89							
3	Claire Selby	W50	DVO	88	88							

Senior Veteran Men

	Name		Club	best 4	UL1	UL2	UL3	UL4	UL5	UL6	UL7	UL8
1	John Duckworth	M55	DVO	100	100							
2	Matt White	M55	LEI	91	91							
3	Steve Chafer	M55	LEI	86	86							
4	David Cladingboel	M55	LEI	85	85							
5	Alastair Paterson	M55	LEI	83	83							
6	Ian Buxton	M60	LEI	82	82							
7	Murray White	M55	DVO	81	81							
8	Andrew Ridgway	M60	NOC	80	80							
9	Gary Kelsall	M55	DVO	79	79							
10	Stephen Edgar	M55	DVO	76	76							

Senior Veteran Women

	Name		Club	best 4	UL1	UL2	UL3	UL4	UL5	UL6	UL7	UL8
1	Helen Parkinson	W55	NOC	100	100							
2	Michelle Mackervoy	W55	DVO	96	96							
3	Alison Hardy	W55	LEI	93	93							
4	Catherine Hughes	W55	NOC	91	91							
5	Sal Chaffey	W60	DVO	90	90							
6	Amanda Roberts	W60	LOG	89	89							
7	Susan Buxton	W60	LEI	85	85							
8	Carol Stynes-Martin	W55	LEI	84	84							
9	Karen White	W55	LEI	83	83							
10	Nicola Hart	W60	DVO	82	82							

Ultravet Men

	Name		Club	best 4	UL1	UL2	UL3	UL4	UL5	UL6	UL7	UL8
1	Stephen Martin	M65	LEI	96	96							
2	Mike Gardner	M65	DVO	89	89							
3	Robert Parkinson	M65	NOC	87	87							

EMEWS

4	Patrick Tranter	M65	RAFO	85	85							
5	Malcolm Spencer	M65	DVO	84	84							
6	Stephen Kimberley	M65	DVO	83	83							
7	John Hopper	M70	DVO	80	80							
8	Andrew Wallace	M65	NOC	78	78							
9	Jeffrey Baker	M70	LOG	77	77							
10	Brian Denness	M70	DVO	74	74							

Ultravet Women

	Name		Club	best 4	UL1	UL2	UL3	UL4	UL5	UL6	UL7	UL8
1	Jane Booker	W70	NOC	87	87							
2	Trudy Crosby	W65	LOG	86	86							
3	Ruth Ellis	W70	DVO	84	84							
4	Judith Evans	W65	DVO	82	82							
5	Anne Kimberley	W65	DVO	81	81							
6	Maureen Webb	W70	LEI	80	80							
7	Viv Macdonald	W70	DVO	78	78							

Hypervet Men

	Name		Club	best 4	UL1	UL2	UL3	UL4	UL5	UL6	UL7	UL8
1	Roger Edwards	M75	LEI	96	96							
2	Kevin Gallagher	M75	LEI	91	91							
3	Doug Dickinson	M75	DVO	88	88							
4	Pat Squire	M75	NOC	86	86							
5	John Marriott	M75	LEI	85	85							
6	Derek Gale	M80	DVO	84	84							
7	Rex Bleakman	M80	DVO	83	83							
8	Stuart Swalwell	M75	DVO	81	81							
9	Dave Skidmore	M75	DVO	80	80							
10	Peter Leake	M80	LEI	78	78							

Hypervet Women

	Name		Club	best 4	UL1	UL2	UL3	UL4	UL5	UL6	UL7	UL8
1	Hilary Palmer	W75	NOC	100	100							
2	Sue Bicknell	W80	LEI	90	90							
3	Jen Gale	W75	DVO	89	89							
4	Tricia Neal	W75	NOC	87	87							

----000----

East Midlands League 2025

The tables below provide the latest standings for the EMOA League 2025. With a total of 13 events, the best 7 scoring events count towards the league. Tables below are based on standing in the league counting in at least 2 events, scoring more than 1000 points in total, and in the top 10 for that class.

The events included are:

1. 19th January - LEI - Hanging Hill and Boothorpe
2. 9th February - LOG - South Common
3. 23rd March - NOC - Silverhill Woods
4. 18th May - NOC - Bramcote Hills & Hemlock Stone
5. 1st June - DVO - Carsington Pastures
6. 8th June - LEI - Irchester

The events still to come are:

7. 19th October - LEI - Burbage Common
8. 2nd November - DVO - Shipley Park (added)
9. 9th November - NOC - Wellow
10. 23rd November - DVO - Cromford Moor
11. 30th November - LEI - Beacon Hill
12. 21st December - NOC - Strawberry Hill
13. 28th December - LEI - Martinshaw

White - Male

Name	Club	Age	1	2	3	4	5	6	7	8	9	10	11	12	13	Score	Pos
------	------	-----	---	---	---	---	---	---	---	---	---	----	----	----	----	-------	-----

White - Female

Name	Club	Age	1	2	3	4	5	6	7	8	9	10	11	12	13	Score	Pos
Suranne Tolly	LEI	W10	1000					1000								2000	1

Yellow - Male

Name	Club	Age	1	2	3	4	5	6	7	8	9	10	11	12	13	score	Pos
Darwin Buxton	DVO	M12	1000	1000		1000	762									3762	1

Yellow - Female

Name	Club	Age	1	2	3	4	5	6	7	8	9	10	11	12	13	score	Pos
Lily Robinson	NOC	W10			1000	1000	946									2946	1
Maija Brook	LOG	W10		1000	557											1557	2
Kristy Nicholls	LEI	W45				505	669									1174	3
Eila Brook	LOG	W12		662	491											1153	4

Orange - Male

Name	Club	Age	1	2	3	4	5	6	7	8	9	10	11	12	13	score	Pos
Hugh Chester	LEI	M12				714		1000								1714	1

Orange - Female

Name	Club	Age	1	2	3	4	5	6	7	8	9	10	11	12	13	Score	Pos
------	------	-----	---	---	---	---	---	---	---	---	---	----	----	----	----	-------	-----

EMEWS

Grace Robinson	NOC	W12			1000	1000	1000									3000	1
----------------	-----	-----	--	--	------	------	------	--	--	--	--	--	--	--	--	------	---

Light Green - Male

Name	Club	Age	1	2	3	4	5	6	7	8	9	10	11	12	13	Score	Pos
Aidan Chester	LEI	M14		636	759	1000		1000								3395	1
Jacob Miles	LEI	M16	1000	1000	1000											3000	2

Light Green - Female

Name	Club	Age	1	2	3	4	5	6	7	8	9	10	11	12	13	Score	Pos
Imogen Satherley	DVO	W14		1000	1000											2000	1
Cara Tolley	LEI	W14			881			1000								1881	2
Alison Foord	LEI	W50			500	1000										1500	3
Tina Brindley	NOC	W60		210	291	611										1112	4

Very Short Green - Male

Name	Club	Age	1	2	3	4	5	6	7	8	9	10	11	12	13	score	Pos
John Woodall	NOC	M85			1000	864	1000	1000								3864	1
Chris Phillips	LEI	M75		954	739	596		963								3252	2
Ernie Williams	LEI	M80	655	1000		704	851									3210	3
David Anderson	LEI	M85	920		905											1825	4
David Bray	LEI	M70	701					986								1687	5

Very Short Green - Female

Name	Club	Age	1	2	3	4	5	6	7	8	9	10	11	12	13	score	Pos
Sue Bicknell	LEI	W80	1000	1000		1000		1000								4000	1
Maureen Webb	LEI	W70		816		733										1549	2

Short Green - Male

Name	Club	Age	1	2	3	4	5	6	7	8	9	10	11	12	13	scores	Pos.
Roger Edwards	LEI	M75	1000		897	919	1000	1000								4816	1
Peter Chick	LEI	M80		461	633	539	852	713								3198	2
Chris Bosley	LEI	M75	806		827		817	728								3178	3
Dave Skidmore	DVO	M75	744	846	876	693										3159	4
Jeffrey Baker	LOG	M70	803	753		689	541									2786	5
Rex Bleakman	DVO	M80	900		1000		869									2786	6
David Booker	NOC	M70	659	755	545		766									2765	7
Kevin Gallagher	LEI	M75	932	809		1000										2741	8
Derek Gale	DVO	M80		873			832	825								2530	9
Robert Titterington	LEI	M80	710		901		815									2426	10

Short Green - Female

Name	Club	Age	1	2	3	4	5	6	7	8	9	10	11	12	13	score	P
Jane Booker	NOC	W70	976	605	1000	1000	1000									4581	1
Ruth Ellis	DVO	W70	836	742	840	795										3213	2

EMEWS

Trudy Crosby	LOG	W65	792	664		756		1000								3212	3
Elaine Smith	NOC	W65	745		789	751	892									3177	4
Wendy West	LEI	W60	556		462	607	605									2230	5
Diane Blount	DVO	W75	573		654		856									2083	6
Margaret Keeling	DVO	W75	1000				977									1977	7
Karen Bedwell	DVO	W55		516	529		725									1770	8
Christine Middleton	DVO	W75	900				784									1684	9
Felicity Manning	LEI	W70			875		777									1652	10

Green - Male

Name	Club	Age	1	2	3	4	5	6	7	8	9	10	11	12	13	scores	P
John Hopper	DVO	M70	950	918	843	911	848	658								5128	1
John Marriott	LEI	M75	1000		904	693	864	1000								4461	2
Russell Buxton	DVO	M65	839	507		736	764	822								3668	3
Andy Portsmouth	LEI	M70	815	847	713			700								3075	4
Mike Gardner	DVO	M65		986		1000	1000									2986	5
Peter Cholerton	NOC	M70	844		555	736	758									2893	6
Alan West	LEI	M65	740	762	629		749									2880	7
Lester Evans	DVO	M70	669	771	583		653									2676	8
Toby Manning	LEI	M70	758		691		730									2179	9
Peter Hornsby	LEI	M70				785	631	742								2158	10

Green - Female

Name	Club	Age	1	2	3	4	5	6	7	8	9	10	11	12	13	scores	Pos
Judith Evans	DVO	W70	1000	948	914		783	913								4518	1
Amanda Roberts	LOG	W60	693	1000		1000	912									3605	2
Jane Dring-Morris	LEI	W55	649	700	614	766	657									3386	3
Kim Buxton	DVO	W60	819			720	752	1000								3291	4
Tracey Brookes	LEI	W60	777	667	612	786										2842	5
Ursula Williamson	LEI	W60		682	658	719		715								2774	6
Christine Elliott	NOC	W65			805	882	896									2583	7
Jessica Williams	DVO	W18	482	440	402	554	450									2328	8
Helen Parkinson	NOC	W55		834	654	706										2194	9
Emily Williams	DVO	W45	525	485		565	509									2084	10

Blue - Male

Name	Club	Age	1	2	3	4	5	6	7	8	9	10	11	12	13	scores	Pos
Andrew Ridgway	NOC	M60	989	794	865	980	727	1000								5355	1
Toby Miles	LEI	M55		765	886	916	696	910								4173	2
David Cladingboel	DVO	M55	751	588	674	785	502	780								4080	3
Alastair Paterson	LEI	M55		740	809	825	673	936								3983	4
Ian Buxton	LEI	M60	900			1000	663	930								3493	5
James Prince	DVO	M55	847		883	996	706									3432	6
Ed Chester	LEI	M50	723	680	748	787										2938	7
Ian Wells	RAFO	M70	847	673			564	807								2891	8

EMEWS

Dai Bedwell	DVO	M55		870	1000		816									2686	9
Tom Hartland	DVO	M50			832	828		719								2379	10

Blue - Female

Name	Club	Age	1	2	3	4	5	6	7	8	9	10	11	12	13	score	Pos
Tanya Taylor	LOG	W55	1000	1000	1000	1000	1000									5000	1
Alison Hardy	LEI	W55	943	784	968											2695	2
Nicola Hart	DVO	W60	819		939		824									2582	3
Monica Henderson	NOC	W35	686	580		691	620									2577	4
Hebe Parr	NOC	W21		558	703	587										1848	4
Ann-Marie Duckworth	DVO	W55		775	953											1728	6
Helen Chiswell	DVO	W45	827				796									1623	7
Sal Chaffey	DVO	W60	805				768									1573	8
Patricia Wong	NOC	W55			687		555									1242	9

Brown - Male

Name	Club	Age	1	2	3	4	5	6	7	8	9	10	11	12	13	score	Pos
Richard Robinson	NOC	M40			972	1000	999									2971	1
Nerijus Rozkovas	DVO	M35	853			902	897									2652	2
Roger Phillips	LEI	M45	594		621	595		613								2423	3
Richard Parkin	DVO	M55		1000	1000											2000	4
Roy Mitton	NOC	M55	618		620	594										1832	5
David Newton	DVO	M45			749		732									1481	6
Andrew Evans	LOG	M45				552	589									1141	7

Brown - Female

Name	Club	Age	1	2	3	4	5	6	7	8	9	10	11	12	13	score	Pos
Anna-Kaisa Koskela-Brook	LOG	W40		638	1000											1638	1

----000---

Puzzle Page

Answer to EMEWS Puzzle 296.

A = Cox family; B = Smith family; C = Wright family; D = Lacey family

The logic works such that:






From statement 1 the Smith family are quarter B or C and the Lacey family are quarter A or D.

From statement 2 the Cox family are quarter A or B and the Wright family are quarter C or D.

From statement 3, quarter D must belong to the Cox or Lacey family. Therefore, the Lacey family have quarter D (Cox family must be quarter A or B). Therefore as Wright family were C or D and Lacey family are D, the Wright family must be C. We now know Smith family are B or C (statement 1) and A or B (statement 4), so they must be B. Which leaves quarter A for the Cox family.

Again this month we can go back to the plantation grid and see how competitors get from the start to the finish. The numbers along the edges of the grid indicate how many sections of the plantation are used in the route (the numbers include the use of start and finish). The route cannot cross itself and only uses a plantation section once. The direction out of the start and into the finish are provided, along with a short section of the route.

Complete the route that gets you from the start to the finish, while meeting the number of plantation sections shown at the top of each column, and row. I'll provide the answer in next EMEWS.

	5	3	4	4	6	4	8	4	
									8
									7
									2
									6
									2
									3
									8
START								FINISH	4

----000----

Fixtures

This fixture list is intended to list all major events in the UK, and all East Midlands events. It includes all the information available to me about the event at the time of going to press. Details on entry are normally available on the club sites. Unless otherwise stated, Local events offer entry on the day (EOD) to a range of colour coded courses with start times from 10:30 to 12:30. Some will provide a wider range of courses than others. Regional events provide colour coded within which age classes can be run. National events provide a range of age-related courses and are normally entered in advance.

The OS map reference is either the car park or point from which the event will be signposted. The list is based on BOF registration, but events are sometimes cancelled. If you are uncertain of whether an event will be on, check with the organiser. The editor takes no responsibility for wasted journeys.

Many events are currently pre-entry only, so please check the event details before travelling.

July 2025

Thu 3 rd	LEI Summer League 12 Market Harborough	Locl	LEI	EM	Market Harborough	Market Harborough	SP734871
Sat 5 th	EPOC Urban	Regl	EPOC	YH	Dalton	Huddersfield	
Sat 5 th	Hanley Park - Local League 6 - double sprint +score	Locl	POTOC	WM	Hanley Park	Hanley	SJ882466
Sat 5 th	Hardwick Navigation Festival	Act	DVO	EM	Hardwick Park	Chesterfield	
Sun 6 th	Yvette Baker Trophy Final - Capite Wood, Ashington, West Sussex (adjacent A24)	Natl	SO	SE	Capite Wood	Ashington, West Sussex	TQ158175
Sun 6 th	EPOC Urban	Regl	EPOC	YH	Almondbury	Huddersfield	
Sun 6 th	Randlay & Stirchley Urban Event WMUL	Regl	WRE	WM	Randlay & Stirchley	Telford	
Tue 8 th	LEI Summer League 13 Aylestone Meadows	Locl	LEI	EM	Aylestone Meadows	Leicester	SK573013
Tue 8 th	MDOC Summer evening	Locl	MDOC	NW	Alderley Edge	Alderley	
Wed 9 th	Warwick University	Locl	OD	WM		Coventry	
Wed 9 th	Evening Event	Loc	SYO	YH	Hathersage	Sheffield	SK231815
Sat 12 th	Urban Event - EuroCity Weekend (UKOL)	Natl	NOC	EM	The Meadows	Nottingham	SK573379
Sat 12 th	Saturday Series Prizegiving Event	Locl	SYO	YH	Millhouses Park	Sheffield	
Sun 13 th	LOG EuroCity Race - Urban(UKOL)	Natl	LOG	EM	Lincoln	Lincoln	SK969711
Wed 16 th	LEI Summer League 14 Dishley	Locl	LEI	EM	Dishley	Loughborough	SK513203
Sat 19 th	AIRE Sprint/Urban Weekend	Regl	AIRE	YH	Shipley and Saltaire	Bradford	
Sun 20 th	AIRE Sprint/Urban Weekend	Regl	AIRE	YH	Bradford City Centre	Bradford	
Thu 24 th	LEI Summer League 15 Brock's Hill	Locl	LEI	EM	Brock's Hill	Leicester	SP618998
Sun 27 th	Scottish 6 Days 2025 - Glen Feardar	Natl	MOR	SOA	Glen Feardar	Ballater	
Mon 28 th	Scottish 6 Days 2025 - Glen Feardar	Natl	MARO C	SOA	Glen Feardar	Ballater	
Tue 29 th	Scottish 6 Days 2025 - Creag	Natl	ESOC	SOA	Creag Choinnich	Braemar	

EMEWS

	Choinnich (UKOL)						
Wed 30 th	Scottish 6 Days 2025 Rest Day - Ballater Sprint (Urban)	Regl		SOA		Ballater	
Thu 31 st	Scottish 6 Days 2025 - Balfour (WRE) (UKOL)	Natl	FVO	SOA	Balfour	Birse	

August 2025

Fri 1 st	Scottish 6 Days 2025 - Glen Dye (WRE)	Natl	INT	SOA	Glen Dye	Banchory	
Sun 3 rd	Sprint Scotland Race 1 (SOUL 5)	Regl	MA	SOA	Livingston	Livingston	
Sun 3 rd	Sprint Scotland Race 2	Regl	MA	SOA	Livingston	Livingston	
Tue 5 th	LEI Summer League 16 East Goscote	Locl	LEI	EM	East Goscote	Leicester	SK636133
Sat 9 th	Milton Keynes Urban	Regl	SMOC	EA	Great Linford	Milton Keynes	
Sat 9 th	Wolds Mini Mountain Marathon	Loc	LOG	EM	Donington on Bain	Donington on Bain	TF236829
Sat 9 th	Local Event Markeaton Park	Loc	DVO	EM	Markeaton Park	Derby	SK333375
Sun 10 th	East Midlands Urban League 2025	Regl	LEI	EM	Lutterworth	Lutterworth	
Wed 13 th	War Memorial Park (tbc)	Locl	OD	WM		Coventry	
Wed 13 th	LEI Score Cup and Summer League Presentations Bagworth	Locl	LEI	EM	Bagworth	Coalville	SK457068
Sat 16 th	Score Event and BBQ	Locl	POTOC	WM	Brough Park	Leek	SJ986570
Sun 17 th	Kenilworth WMUL Urban Event	Regl	OD	WM		Kenilworth	
Fri 22 nd	White Rose Night Score	Loc	EBOR	YH	Dalby Forest	Pickering	
Sat 23 rd	White Rose	Natl	EBOR	YH	Dalby	Pickering	
Sun 24 th	White Rose and YHOA SuperLeague	Natl	EBOR	YH	Dalby	Pickering	
Mon 25 th	White Rose Sprint	Regl	EBOR	YH	Dalby	Pickering	
Wed 27 th	Rosliston Forestry Centre local event	Loc	DVO	EM	Rosliston Forestry Centre	Swadlincote	SK243174
Sat 30 th	British Sprint Relay Championships	Maj		EA	RAF Honington	Bury St Edmunds	
Sun 31 st	British Sprint Championships (UKOL)	Maj		EA	University of East Anglia	Norwich	

September 2025

Sat 6 th	East Midlands Urban League 2025	Regl	LEI	EM	Hamilton	Leicester	
Sun 7 th	Midlands Championships (UKOL)	Natl	DVO	EM	Chinley Churn	New Mills	SK035836
Sat 13 th	Hanley Urban	Locl	POTOC	WM		Hanley	
Sat 13 th	Saturday Series 1	Loc	SYO	YH	Endcliffe Park	Sheffield	
Sun 14 th	CompassSport Cup Final	Majr	CLOK	NE	South Gare	Redcar	NZ574256
Sat 20 th	AIRE Town and Country Weekend	Regl	AIRE	YH	Skipton	Skipton	
Sat 20 th	SLOW City of London Race	Natl	SLOW	SE	tba	London	
Sat 20 th	Trail O weekend	Locl	HALO	YH	Humber Bridge Country Park	Hull	
Sun 21 st	Peter Palmer Junior Team	Natl				tbc	

EMEWs

	Relays						
Sun 21 st	AIRE Town and Country Weekend & YHOA SuperLeague	Natl	AIRE	YH	Moughton and Sulber	Austwick	
Sun 21 st	Trail O weekend	Locl	HALO	YH	Humber Bridge Country Park	Hull	
Sun 21 st	John Bennison Long O	Loc	WRE	WM	Long Mynd - Plush Hill	Church Stretton	SO451964
Sat 27 th	Elmdon Country Park Event (combined SI/Map Run event) TBC	Loc	OD	WM	Elmdon Country Park	Solihull	
Sun 28 th	YHOA Sprint Championships	Regl	EBOR	YH	North Yorkshire Water Park	Scarborough	
Sun 28th	East Midlands Urban League 2025	Regl	NOC	EM	Retford	Retford	
Sun 28 th	WMUL Event - Castle Vale	Regl	HOC	WM	Castle Vale	Castle Vale	
Sun 28 th	HAVOC East Anglian League and SWELL	Regl	HAVO C	EA	Epping Forest South West	Chingford	TQ394949
Sun 28/09/25	WMUL Event - Castle Vale	Regional	HOC	WM OA	Castle Vale	Castle Vale	

October 2025

Sat 4 th	Autumn in Anglia West Harling EA Sch Champs	Regl	SUFFO C	EA		Thetford	
Sat 4 th	DEE weekend - Double Sprint event - Reaseheath College, Nantwich	Regl	DEE	NW	Reaseheath College	Nantwich	SJ643546
Sun 5 th	DEE weekend - Nantwich Urban event (UKUL)	Regl	DEE	NW	Nantwich	Nantwich	
Sun 5 th	West Midlands Relay Championships Pooley Country Park	Regl	OD	WM		Pooley	
Sun 5 th	Ely Urban- Autumn in Anglia	Regl	WAOC	EA	Ely	Ely	
Sat 11 th	MDOC Urban weekend	Regl	MDOC	NW	Macclesfield, Upton Priory	Macclesfield	
Sat 11 th	SO Urban - Chichester (part of the November Classic weekend) (UKOL)	Regl	SO	SE	Chichester	Chichester	
Sat 11 th	Madeley Court Local Event	Loc	WRE	WM	Madeley Court	Telford	SJ695046
Sat 11th	Local Event - Whitworth Park and Darley Dale	Loc	DVO	EM	Whitworth Park & Darley Dale	Matlock	SK273629
Sat 11 th	Saturday Series 2	Locl	SYO	YH	EIS & Olympic Legacy Pk	Sheffield	
Sun 12 th	November Classic (UKOL)	Natl	SOC	SC	New Forest	Southampton	
Sun 12 th	MDOC Urban weekend	Natl	MDOC	NW	Stockport Town Centre	Stockport	
Sun 12th	East Midlands Urban League 2025	Regl	LOG	EM	Newark Town	Newark	
Sat 18 th	October Odyssey Day 1	Natl	NATO	NE	Cramlington	Cramlington	
Sat 18 th	Caddihoe Day 1 Holne Moor (UKOL)	Natl	DEVON	SW	Holne Moor	Ashburton	SX694702
Sat 18 th	SELOC Saturday - Haigh	Regl	SELOC	NW	Haigh Woodland Park	Wigan	SD596087
Sun 19 th	October Odyssey Day 2	Natl	NATO	NE	Beanley	Alnwick	

EMEWS

Sun 19 th	Caddihoe Day 2 Holne Moor (UKOL)	Regl	DEVON	SW	Holne Moor	Ashburton	SX694702
Sun 19 th	SYO National & YHOA SuperLeague	Natl	SYO	YH	Roych Clough and Brown Knoll	Chapel-en-le-Frith	
Sun 19 th	Scottish Score Championships	Regl	FVO	SOA	Falkirk Wheel	Falkirk	NS854800
Sun 19th	EMOA League (Burbage)	Regl	LEI	EM	Burbage Common	Hinckley	
Sun 19 th	Sheringham Park	Regl	NOR	EA	Sheringham Park	Sheringham	
Sat 25 th	Hertford - WAOC/HH weekend	Regl	WAOC	EA	Hertford	Hertford	
Sat 25 th	Daventry NE and Daventry Country Park (mixed SI Map Run event) TBC	Locl	OD	WM	Daventry Country Park	Daventry	
Sun 26 th	YHOA Championships and YHOA SuperLeague	Regl	EPOC	YH		East Pennines	
Sun 26 th	Parkhall - POTO 50th Anniversary Event & WML	Regl	POTO	WM	Parkhall Country Park	Longton	SJ930446

November 2025

Sat 1 st	Cambridge City Race	Regl	CUOC	EA	Tbc	Cambridge	
Sun 2 nd	HALO Urban	Regl	HALO	YH	Thorne	Thorne	
Sun 2 nd	WML - Severn Valley Country Park	Regl	WRE	WM	Severn Valley Country Park	Bridgnorth	
Sun 2nd	EMOA League 2025 Shipley Country Park	Locl	DVO	EM	Shipley Country Park	Derby	SK432454
Sun 9 th	WCH Urban UKUL Event	Regl	WCH	WM	Etching Hill	Rugeley	
Sun 9th	EMOA League 2025	Regl	NOC	EM	Wellow Park	Ollerton	
Sun 16 th	WM League Event - British Camp	Regl	HOC	WM	British Camp	Malvern	
Sun 16 th	SELOC NWUL urban-Salford University and Cathedral	Regl	SELOC	NW	Salford	Salford	
Sat 22 nd	Downs Banks	Locl	POTO	WM	Downs Banks - nr Barlaston	Stone	SJ900365
Sun 23rd	EMOA League 2025 Cromford Moor	Regl	DVO	EM	Cromford Moor	Wirksworth	SK291557
Sun 30 th	YHOA SuperLeague	Regl	AIRE	YH	Bingley St Ives & Harden Moor	Bingley	
Sun 30th	EMOA League 2025	Regl	LEI	EM	Beacon Hill	Leicester	
Sun 30 th	Mildenhall South	Regl	WAOC	EA	Mildenhall South	Mildenhall	

December 2025

Sun 7 th	HALO Regional Event	Regl	HALO	YH		Humberside	
Sun 7 th	WCH WMOA League Event	Regl	WCH	WM	Brindley Valley	Cannock	
Sun 14 th	YHOA SuperLeague	Regl	SYO	YH	Ramsley Moor	Sheffield	
Sun 14 th	Brandon Wood WML Middle Event (tbc)	Regl	OD	WM		Coventry	
Sun 21 st	EPOC Regional	Regl	EPOC	YH	Oakwell Hall (tbc)	East Pennines	
Sun 21st	EMOA League 2025	Regl	NOC	EM	Strawberry Hill	Mansfield	
Sun 28th	EMOA League 2025	Regl	LEI	EM	Martinshaw	Leicester	

January 2026

1st	DVO EMOA Urban League - Matlock	Regl	DVO	EM	Matlock	Matlock	
-----------------------	--	-------------	----------------------------	-----------	----------------	----------------	--